

# Sesame

## SCOPE

This standard specifies the conditions and characteristics that should be present in Sesame Seeds

## DEFINITIONS

Sesame seeds are produced from the Sesame indicum L. Sesame seeds are classified according to colour into:

### WHITE SESAME

These are seeds of which the external shells colour varies from white to yellowish white, provided that the coloured seeds don't exceed 5% of the representative sample

### MIXED SESAME

These are white sesame seeds which contains a maximum of 25% of coloured seeds

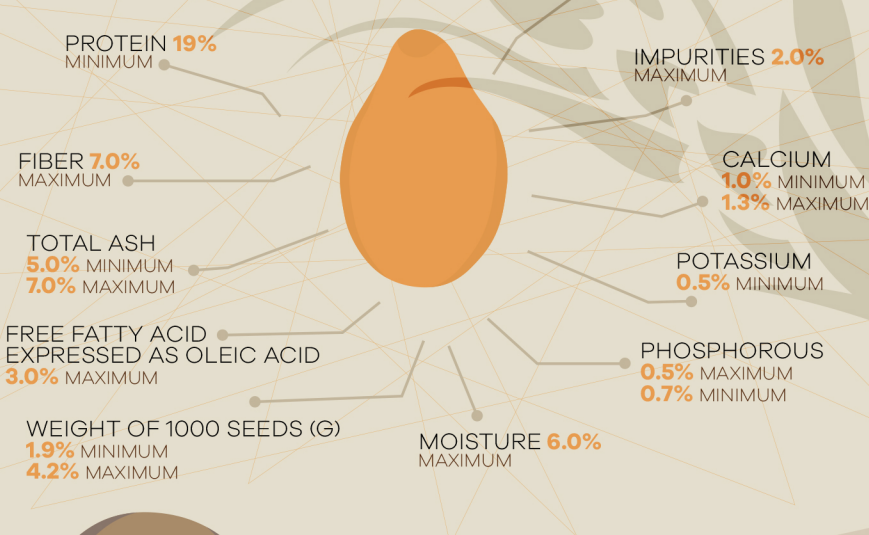
### RED SESAME

These red or brown sesame seeds are white seeds which contains 26% or more of coloured seeds

coloured seeds means sesame seeds of dissimilar colour to the seeds determined in 2.1, 2.2, 2.3 above

## STANDARD SPECIFICATIONS

The specifications which should be present in sesame seeds



## HEALTH CONDITIONS

- The sesame seeds must be free of foreign and off-odour
- The sesame seeds must be entirely free living and dead insects, their parts and the remains of rodents
- The pesticide and chemical fertilizer residues must not exceed the internationally permitted limits

## METHODS OF SAMPLING

Sampling of representative samples from the consignment must strictly follow the representative specified in the sampling and storage methods of oil seeds according to the Sudanese Standard Specifications of sampling of the oil seeds methods No. 2000/2002

## PACKAGING AND STORAGE

Sesame must be packed in packages which allow respiration of the seeds e.g. Jute . The packages must be clean, dry, strong and free from foreign and off- transmission of direct sunlight, humidity and pollution sources

## THE IDENTIFYING LABEL

A clear identifying label which is indestructible, unremovable and properly fixed on the package should contain the following information:

NAME OF THE CROP	EXPORTING COMPANY NAME	TYPE OF THE CROP (WHITE , RED , MIXED)	CODE NUMBER
SESAME	BRAND NAME		
COUNTRY OF ORIGIN	SEASON OF PRODUCTION	NET WEIGHT (KG)	TRADE MARK